

LASE ONE

MICRO WELDING

- S P O T P L A S M A -

THE ALTERNATIVE TO LASER WELDING

- Plasma arc spot welding (0 to 300 joules)
- Weld quality and aspect very similar to that of laser weld
- No overheating / deformations
- Easy assembly and repair welds of very small as well as large parts
- Weld time adjustable to the tenth of a millisecond (pulse duration 0.1 to 10 ms)
- Reliable and easy to use
- Programmable
- Welding of ferrous / non-ferrous / precious materials (gold, silver, etc.)
- Economical and safe
- Welding power and weld time independently adjustable



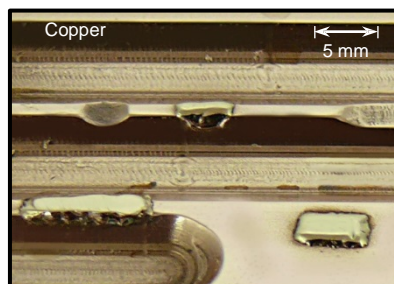
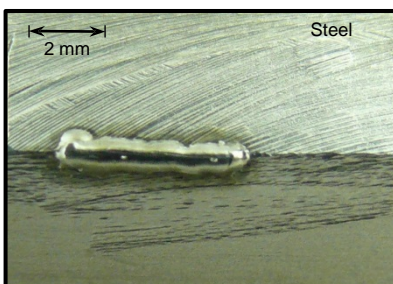
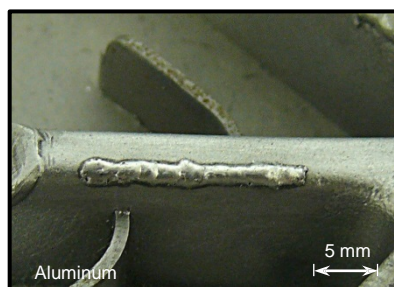
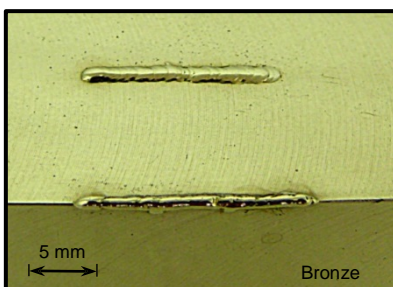
LASE ONE MODELS

200j

250j

300j

TYPICAL APPLICATIONS



LASE ONE technology is the solution to all your problems when it comes to complex assembly and repair micro-welding.

LASE ONE delivers welding intensity with total control and precision, for a wide range of applications, materials and configurations. Efficient, easy to use, compact and versatile, it displays the qualities of pulsed YAG laser welding and the benefits of an electric solution: simplicity and economy.



TECHNICAL CHARACTERISTICS

MODEL	LASE ONE 200j	LASE ONE 250j	LASE ONE 300j
Maximum weld energy at output (joules)	200 joules	250 joules	300 joules
Power supply	1~220 V / 50 Hz / 60 Hz		
Control type	Current regulation		
Energy settings	By 1% increments of total energy		
Pulse duration	Adjustable (0.1 ms to 10 ms)		
Generator cooling	Forced air		
Size	L 420 mm x W 240 mm x H 280 mm		
Weight	25 Kg		
Programming	9 adjustable programmes		
Adjustable external settings	<ul style="list-style-type: none"> ▪ Welding power (0 to 99 %) ▪ Pulse duration (0.1 to 10 ms – by 0.1 ms increments) 		
Maximum pulse rate	Factory configuration: 4 pulses / second (300j)		
Weld area protection	Inert gas (argon 4.5—UN1006)		
Accessories and options (*) Model-dependent	<ul style="list-style-type: none"> ▪ Control pedal ▪ Micro-welding torch ▪ Ø 1.0 mm ; 1.6 mm ; 2.4 mm electrodes ▪ Clamp holders for Ø 1.0 mm ; 1.6 mm ; 2.4 mm electrodes ▪ Collet bodies for Ø 1.0 mm ; 1.6 mm ; 2.4 mm electrodes ▪ Nozzles ▪ Welding helmet with x2.5 dioptre magnifying lens* ▪ Binocular stereo microscope x4 to x20 with articulated arm* ▪ (shutter & adjustable 64-LED ring light illuminator) 		

ACCESSORIES



Mobile telescopic generator stand



Binocular stereo microscope



Welding helmet



Control pedal



Microwelding torch

Official distributor for SST Microwelding:
 118 South Jennings Street - Sioux City, Iowa 51101
 Phone (800) 255-6046 (712) 255-6046 Fax (712) 252-5619
 info@equipmentsalesco.net / www.equipmentsalesco.net

